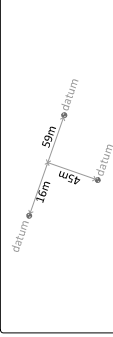
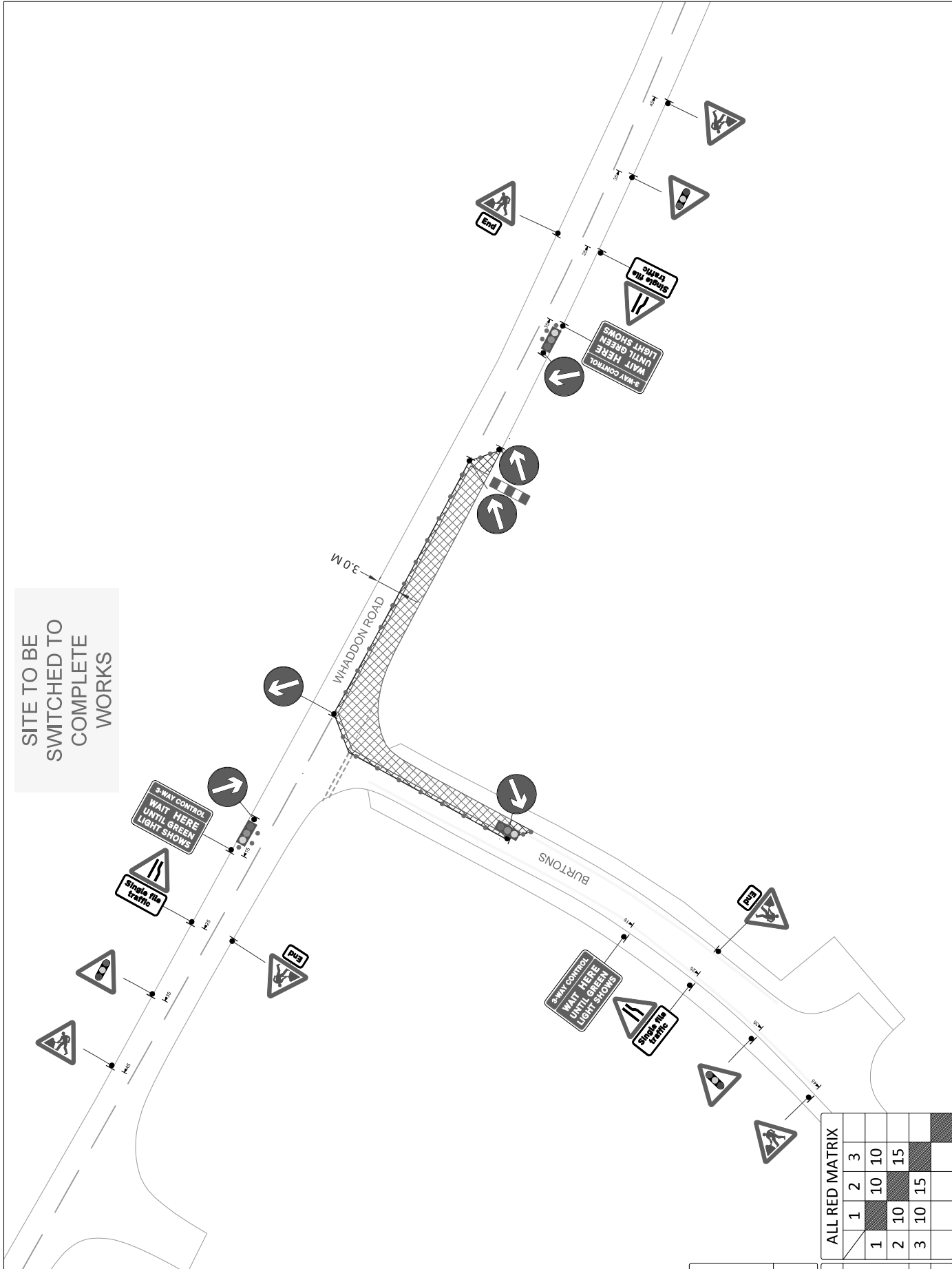


SITE TO BE SWITCHED TO COMPLETE WORKS



Note:
The Traffic Lights being used are manufactured by Pike Signals Ltd, and the datum points are set from the start of site to the end of site, not the centreline of junction.

STAGE DIAGRAM		
1	2	3
SIGNAL TIMINGS		
MAX GREEN 40	MAX GREEN 40	MAX GREEN 40

ALL RED MATRIX			
	1	2	3
1		10	10
2	10		15
3	10	15	

Speed Limit Safety Zone

30 SPEED LIMIT SAFETY ZONE

SIGNS
CONE
BARRIER
TRAFFIC SIGNAL
NO PARKING CONE

WORKS AREA
SAFETY ZONE

- MIBS
- All dimensions are in metres unless otherwise stated.
 - All traffic management to comply with Chapter 6 and any updates.
 - All road markings and signs to be as per the Traffic Signs Regulations and General Directions 2016.
 - Where a sign is not specified, the sign to be used is the one that is most appropriate to the situation. This should be done with approval from road authority.
 - Maintenance for pedestrian on footways. If this cannot be maintained signs to be placed in the carriageway with associated cones.

HSM
HIGHWAY SAFETY MANAGEMENT LTD
BEACONSFIELD ROAD
IPSWICH
SUFFOLK, IP1 4AD
01449 745755 (t)
www.highwaysafe.co.uk

Client: **PARROTT UTILITIES**
Location: **WHADDON ROAD, ROYSTON, SG8 5FL**
Work Details: **PU1413**

Description		Rev.	Date	By	Checked	Approved
Original Issue for Comments		P1	24/05/21	LR	SB	TC
Revisions		P2				
		P3				
		P4				
		P5				
		P6				
		P7				

Originator: **HSM** LR
Designer: **NOT TO SCALE**
Date: **MAY 2021**
Drawing Number: **HSM/38132/LR/01**
Revision: **P1**