

Meldreth Parish Plan Data Analysis

April 2005

PEOPLE & THEIR ACCOMMODATION

Question Number 1

How many people including children normally live in your household?

Responses

453 households containing 1137 people

Comments

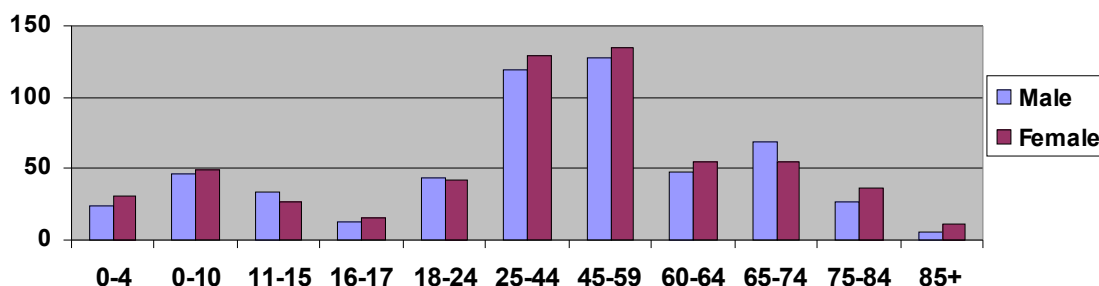
Responses covered 72% of the occupied dwellings at the time of the survey

Question Number 2

Please enter the number of people in your household in each age group:

Responses

Numbers in each Age Group



Analysis

Average age of people in the responding households was 42 years

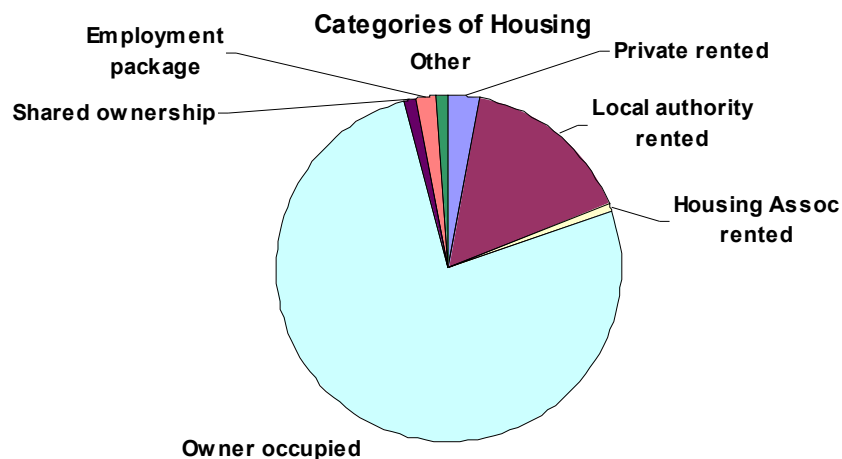
27% were 60 or over

21% were 17 or under

Question Number 3

Is this dwelling? Private rented; Local authority rented; Housing Association rented; Owner occupied; Shared ownership (part owned/part rented); Provided as part of employment; Other

Responses



Analysis

76% of dwellings were owner occupied

16% were local authority rented

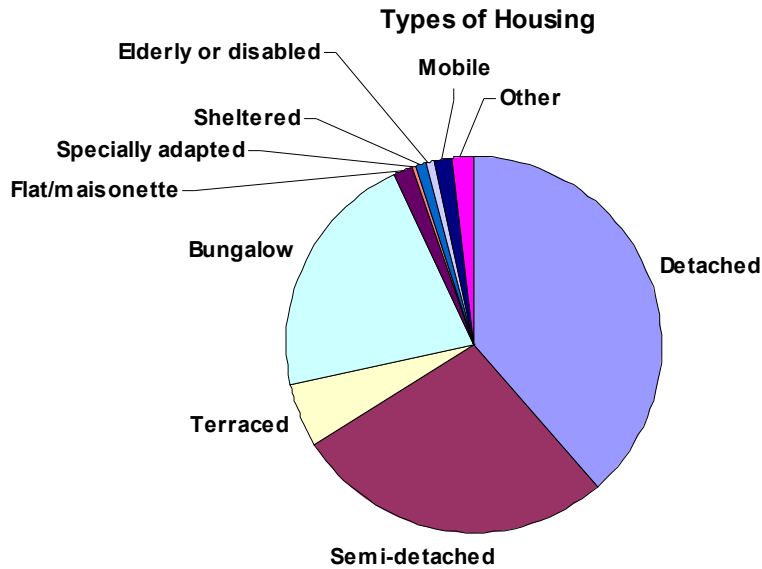
Meldreth Parish Plan Data Analysis

April 2005

Question Number 4

What type of dwelling is this? Detached house; Semi-detached house; Terraced house; Bungalow; Flat/maisonette; Specially adapted housing; Sheltered housing with warden; Purpose built for elderly or disabled with alarm but no resident warden; Mobile home/caravan; Other

Responses



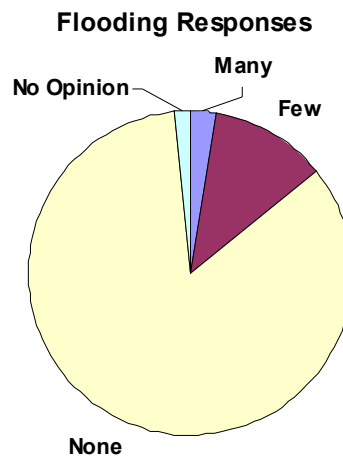
Analysis

The typical Meldreth resident is 42, owns their own detached house and lives in a household of 2.4 people

Question Number 5

Do you have flooding problems with surface water or storm drainage?

Responses



Analysis

14% of households have some flooding problems with surface water and/or storm water drainage

Comments

Maintenance of storm drains, ditches and gullies continues to be a problem. This was also noted by 34% of businesses and needs action.

Meldreth Parish Plan Data Analysis

April 2005

ALTERNATIVE ACCOMODATION & HOUSING

Question Number 6

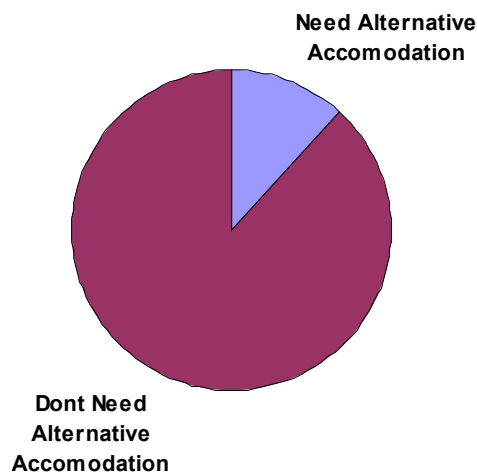
Is any individual in your household, or your whole household, currently in need of alternative accommodation?

Responses

Number of Households : 453

51 (11 %) Yes

386 (85 %) No



Analysis

51 in need of alternative accommodation - 11% of those responding

Number of single occupants in need of alternative accommodation = 8 (out of 96 single occupants).

Number of single parent families in need of alternative accommodation = 2 (out of 10 single parent families)

Note: single parent family defined to be a household having at least on child aged 0-17 and only one adult aged 18-64.

20% of those seeking alternative accommodation are single occupancy or single parent homes.

Question Number 7

Why does your household/Individual need to move?

Responses

Number of Households : 453

0 For employment reasons

11 For family reasons

2 For education

2 To move to a cheaper home

6 To move to a larger home

4 To move to a smaller home

1 To move to a better area

3 To meet the needs of an elderly or disabled person

1 Medical

3 Social

17 Other

Analysis

22% for family reasons, 12% to larger, 8% to smaller home & 34% for undisclosed reasons.

Comments

Employment is not shown as an issue in why people need to move.

Meldreth Parish Plan Data Analysis

April 2005

Question Number 8

If your household/individual is unable to move to accommodation of the type needed, is this because?

Responses

- 26 Price
- 23 Lack of suitable dwellings to buy
- 26 Lack of local authority/housing association homes
- 5 lack of private rented accommodation
- 2 Lack of physically accessible dwellings
- 2 No suitable sheltered housing
- 0 Not able to get a job
- 7 Unable to afford the cost of moving
- 3 Other financial commitments
- 7 Other

Analysis

36% of respondents cited cost issues, 23% lack of suitable accommodation to buy and 26% lack of local authority/housing association homes.

Comments

Employment is not shown as an issue in why people need to move. Need for affordable housing is demonstrated.

Question Number 37

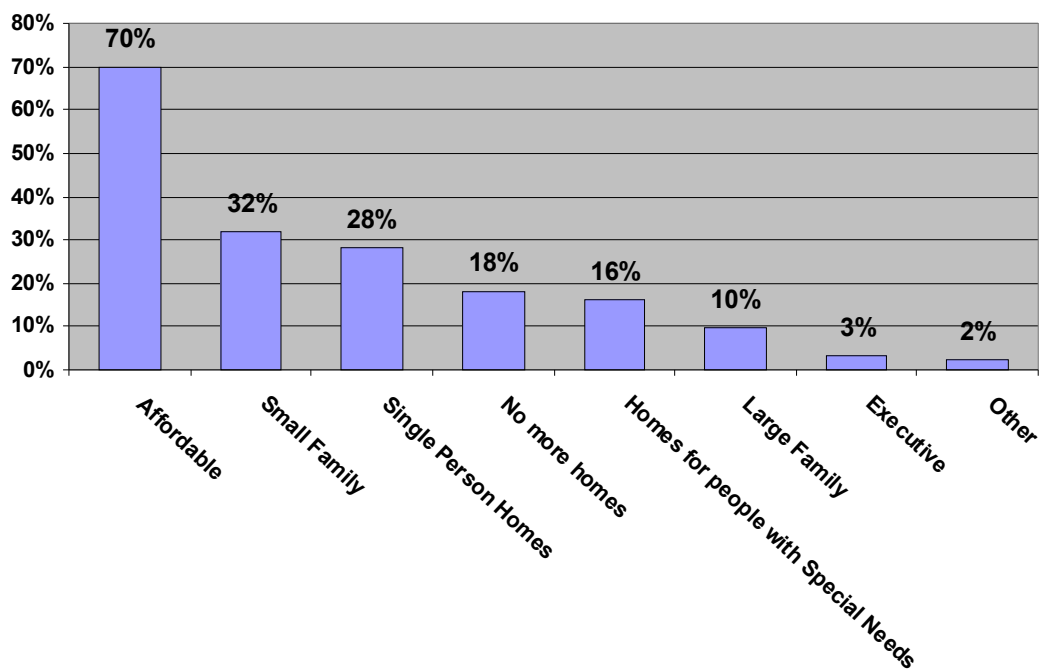
What kind of accommodation do you think Meldreth needs?

Responses

Number of Respondents to Question : 840

- | | |
|------------------------|--|
| 588 Affordable homes | 138 Homes for people with disabilities |
| 81 Large family homes | 237 Homes for single people |
| 268 Small family homes | 153 No further homes are needed |
| 28 Executive homes | 18 Other |

Types of Homes Required



Meldreth Parish Plan Data Analysis

April 2005

Number of responses calling for affordable homes is shown below:

Age	11-15	16-17	18-24	25-44	45-59	60-64	65-74	75-84	85+
M	11	6	19	64	82	27	38	20	3
F	10	9	23	75	90	27	47	21	7

Number of single occupants who believe Meldreth needs affordable accommodation = 65 (out of 96 single occupants) = 67.7%.

Number of single parent families who believe Meldreth needs affordable accommodation = 8 (out of 10 single parent families) = 80%.

Analysis

Support for affordable homes is strongest from people aged 25-44 and 45-59 and from single parent families. 70% of those responding thought Meldreth need more affordable homes. The biggest group of housing style required was small family homes (32%). Only 18% thought no further homes were needed. Other suggestions are: part-ownership, sheltered 2-story retirement flats & rented flats/bed-sits.

Question Number 38

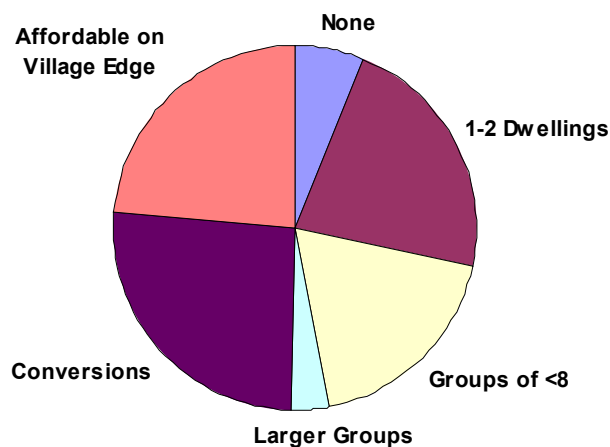
What type(s) of housing development would be acceptable in Meldreth?

Responses

Number of Respondents to Question : 839

- 92 (11%) None
- 344 (41%) One or two dwellings in controlled locations
- 287 (34%) Small group(s) of 8 or less
- 52 (6%) Carefully designed larger group(s)
- 403 (48%) Conversion of redundant buildings
- 362 (43%) Expansion on the edge of Meldreth for low/c housing
- 5 (<1%) Other

Acceptable Housing Developments



Analysis

43% thought low cost housing should be on the edge of Meldreth. 75% supported Meldreth's current status as a group village allowing small (8 & less) and infill developments. All this is in line with the local plan. 48% thought redundant buildings should be converted to housing. Other suggestions: well-mixed developments of low-cost and market housing.

Meldreth Parish Plan Data Analysis

April 2005

Question Number 39

If there is to be more housing in Meldreth where should it be?

Responses

Number of Respondents to Question : 588

Locations mentioned	No. of Mentions
Mettle Hill	167
Closed Traveller/gypsy site	73
West Way	49
Whitecroft Road/Fenny Lane/Kneesworth Road X-roads	59
Kneesworth Road	10
Whaddon Road	6
Whitecroft Road	36
Land behind Whitecroft Road/Holland's site	4
Whitecroft Road/Fenny Lane/High Street triangle	4
Chiswick End	8
Chiswick Supplies	5
Station area	9
Station Road	3
High Street	5
Pub area	2
Gables Close	2
Centre of Village	4
Elin Way	3
Recreation ground (move it elsewhere)	1
North End & towards Shepreth	17
Land between Meldreth & A10	3
Turkey Farm	1
College Farm & behind church towards College Farm	2

Analysis

399 respondents (40%) did not answer the question. Of those that responded 299 (51%) said there should be more housing in the Kneesworth Road/Mettle Hill area (including West Way) and 105 (18%) cited the Whitecroft Road/Whaddon Road area. 17 suggested the areas of North End towards Shepreth.

Comments

The majority of these areas suggested are outside and not adjacent to the village framework and therefore not available for housing under current planning rules.

Meldreth Parish Plan Data Analysis

April 2005

CHILDREN & SCHOOLS

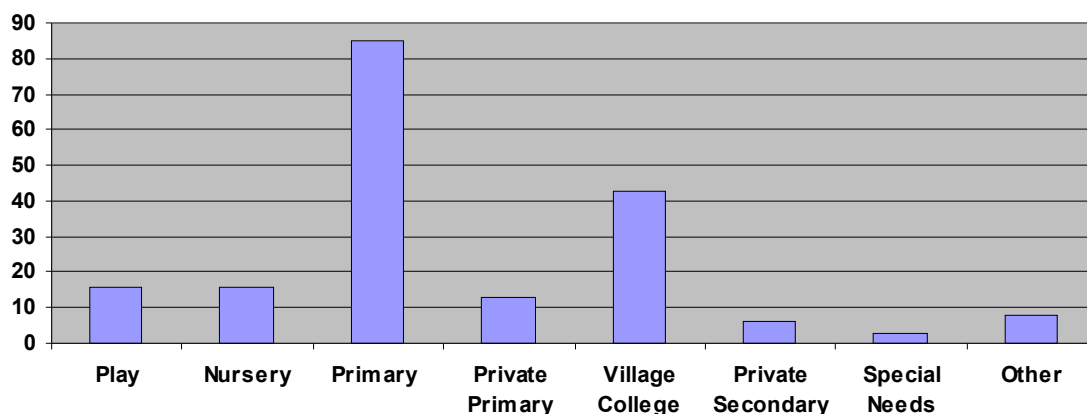
Question Number 9

Enter the number of children under 16 in your household who attend the following :

Responses

- 16 Play group
- 18 Nursery school
- 85 Primary school
- 43 Village college
- 13 Private primary school
- 6 Private secondary school
- 3 School for those with special needs
- 8 Other

Types of Schools Attended



Analysis

There are around 200 children under 16 in Meldreth. Of which almost half attend primary school - most in Meldreth.

Question Number 10

If any of your children under 16 are unable to take part in after school activities, please give the reasons why :

Responses

- 8 Lack of transport to/from home
- 7 Distance between home/school
- 8 Expense
- 3 Special needs not catered for
- 3 Other

Analysis

29 children are unable to take part in after school activities. Half of those cite transport problems, suggesting this is children from the more remote parts of Meldreth or outside Meldreth attending Meldreth School or children who go to school in Cambridge.

Question Number 11

Enter the number of children in your household who have a special educational need:

Responses

- Number of Households : 453
- 10 children with Special Needs

Analysis

10 children with special needs of which 3 are at special needs schools and the remainder in mainstream schools.

Meldreth Parish Plan Data Analysis April 2005

Question Number 12

Please enter the number of people in your household over 16 who attend the following :

Responses

Number of Households : 453

24 Sixth form college

30 University

33 Training courses (work related)

38 Adult education courses

Analysis

125 in sixth form and further education. 355 (20% of village) are being educated.

Question Number 41

How important is it that Meldreth has a primary school?

Responses

Number of Respondents to Question : 887

750 (85%) Very important

75 (9%) Important

9 (1%) Not very important

53 (6%) No opinion

Number of people from families with children 0-10 who think that it is very important that Meldreth has a primary school = 169 (out of 205 people from families with children 0-10)

Analysis

93% responded "very important" or "important". The percentage of people with children 0-10 responding "very important" is, at 82.5%, slightly lower than the general population at 84.6%. Some parents have made other educational choices.

Comments

A Primary School is essential to the life of the village - as are church, shop and good pub.

Meldreth Parish Plan Data Analysis

April 2005

PEOPLE, AGES & EMPLOYMENT

Question Number 14

Sex of respondents to the Personal Section

Responses

From 945 responses 47% were male and 53% female

Analysis

This compares with 987 people 11 and over identified in Q1 of which 49% were male and 51% female

Comments

Females were slightly more disposed to complete the Personal Section than were males

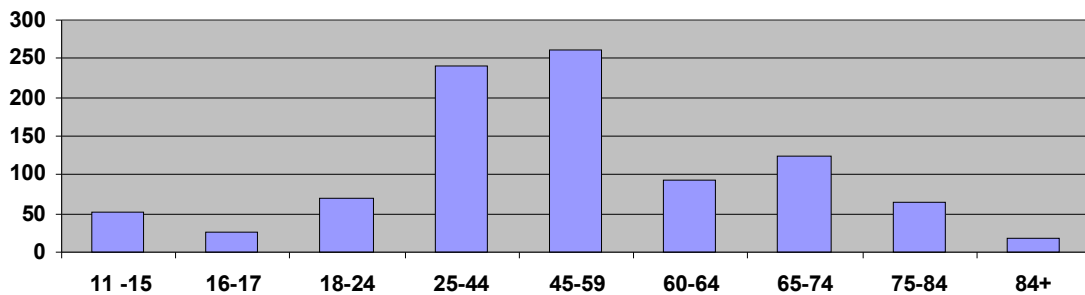
Question Number 15

What age group do you belong to?

Responses

Number of Respondents to Question : 949

Numbers in each Age Group



Analysis

Of the 173 possible people aged 11-24 only 158 went on to complete the Personal section, Whereas 300 of 304 aged over 60 did

Comments

The Personal Section responses are marginally weighted to the opinions of older residents, but of itself this is unlikely to alter the findings of the questionnaire. The plan should ensure youth issues are fully delivered.

Question Number 16

Number

How long have you lived in Meldreth?

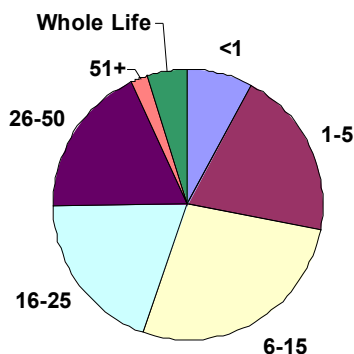
Responses

Number of Respondents to Question : 930

Meldreth Parish Plan Data Analysis

April 2005

Years in Meldreth



Analysis

28% of people have lived in Meldreth for less than 5 years, 21% for over 25 years. The average is about 17 years.

Comments

Since between 5 and 10% of villagers at any one time have lived in the village for less than a year, organisations need to constantly publicise their activities.

Question Number 17

How did you come to live in Meldreth?

Responses

Number of Respondents to Question : 924

- 85 (9%) Born here
- 203 (22%) Work in area
- 115 (12%) Relatives live nearby
- 180 (20%) Love of village life
- 141 (15%) Love of country life
- 159 (17%) Availability of housing
- 37 (4%) Retired here
- 80 (9%) Marriage
- 91 (10%) Setting up home
- 189 (21%) Came with family
- 86 (9%) Other

Analysis

35% listed love of village or country life, 30% for work in the area, 22% were born here and/or have relatives and 17% because of availability of housing.

Comments

Given the average length of time people live in Meldreth (17 years) and the number of people with family roots and/or a love of village/country life, it is unsurprising that there is a strong communal wish to keep the village broadly as it is.

Question Number 20

Are you at present? An employee; Unemployed; Self-employed - employing other people; Self employed - not employing anyone; In a government training scheme; In full-time education; Unwaged housewife/husband; Retired or semi-retired; Permanently sick/disabled

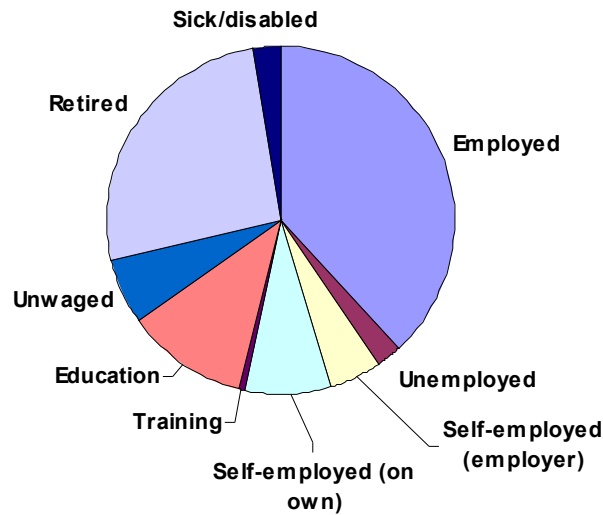
Responses

Number of Respondents to Question : 930

Meldreth Parish Plan Data Analysis

April 2005

Employment status



Analysis

86 of the 242 retired or semi-retired are economically active (they indicated a place of work in answer to Q21). Excluding those in full time education, 68% of respondents undertake paid work of some sort. Only 2.5% classified themselves as unemployed

Comments

There may well be an untapped reservoir of older people or housewives that charities could ask for help.

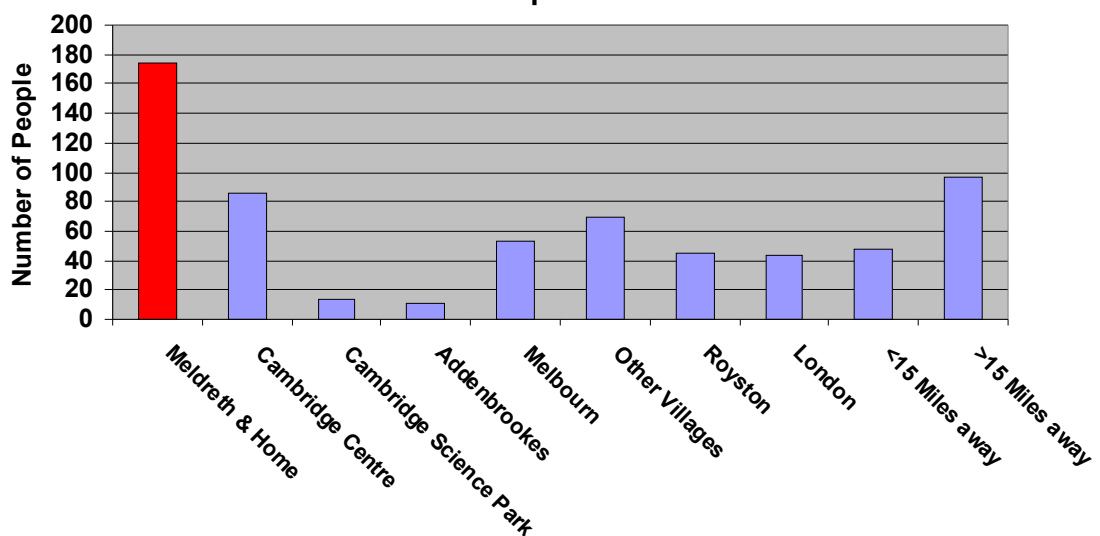
Question Number 21

Where is your main place of work?

Responses

Number of Respondents to Question : 850

Where People Work



Analysis

Respondent's main place of work and study is very varied.

Comments

Meldreth Parish Plan Data Analysis

April 2005

These results and the low proportion of employees of Meldreth businesses who actually live in Meldreth (about 18%) indicate Meldreth is a good base for paid employment.

Question Number 22

If you are actively seeking work, are there any barriers that are preventing you from taking up employment, training or study opportunities?

Responses

There were 72 responses other than "not applicable" or "none of these"

Analysis

7 affected by cost (6) or lack of childcare (1)

8 by lack of access to transport

16 without the right experience or qualifications

9 by disability or ill-health

2 by lack of information or advice

Comments

The government is talking of making childcare more affordable

More frequent buses could remove transport barriers to employment

Better information flows about work experience opportunities could help

Question Number 23

What is, or would be, your main means of transport to work, training or study?

Responses

There were 664 responses other than "not applicable", of these:

70% use car, van, or motor bike/scooter/moped

12% train

8% walk

4% cycle

2% public bus

4% other

Analysis

78 people use the train, whereas 200 work or study in Cambridge, Royston or London

Comments

The paucity of public bus transport is likely to have increased private vehicle use for work and study

Meldreth Parish Plan Data Analysis

April 2005

BUSINESS DEVELOPMENTS

Question Number 24

Should the following be encouraged in and around Meldreth?

Responses

Number of Respondents to Question : 798

	In favour to some degree	No strong opinion	Against to some degree
Small business developments	409	147	153
More jobs in Meldreth	382	188	145
Small scale industrial workshops	285	167	245
Tourism development/attractions	121	196	374

Analysis

In a village where many residents want to maintain its village feel and rural environment, there is still a significant majority of residents who would support more jobs by small business and/or industrial developments. There is a clear majority against tourism/ development/ attractions – indeed 237 said “definitely not”.

Comments

The support for more jobs in the village contrasts with only 18% of villagers being employed in the estimated 600 full-time and 300 part-time jobs offered by village businesses.

TRANSPORT

Question Number 13

How many private cars/vans are used by your household?

Responses

Number of Respondents to Question : 783

Analysis

453 households own 739 vehicles – that is 1.63 vehicles per household

Question Number 25

Do you share private vehicles with other people for?

Responses

Number of Respondents to Question : 783

Analysis

For 60% this was not applicable – of remainder 32% shared for social purposes, 14% for shopping and & only around 6% for either school runs or work.

Question Number 26

Which of the following is your major means of transport?

Responses

Number of Respondents to Question : 906

Analysis

Unsurprisingly 84% used car/van or motorbike. 2% used bus, 8% train, 4% bicycle.

Comments

More people use bikes than buses for main transport – there is no evidence that a better bus service will be used.

Meldreth Parish Plan Data Analysis

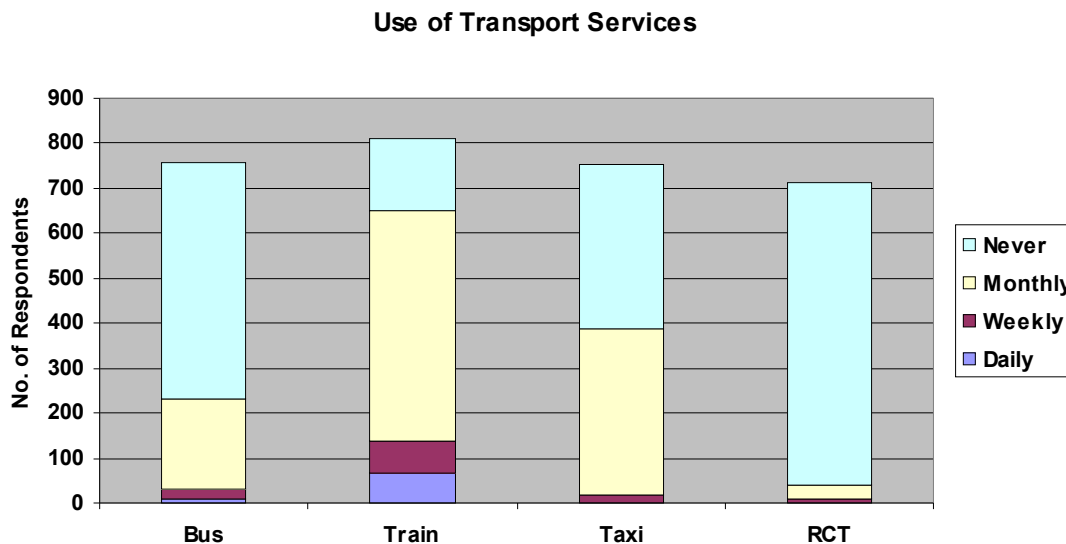
April 2005

Question Number 27

How often do you use the following services? Bus; Train; Taxi; Royston & District Community Transport Scheme

Responses

Number of Respondents to Question : 892



Analysis

Buses: 60% of respondents never used one.

Trains: used daily & weekly by 7-8% but monthly by nearly 60%

Taxis: 40% used monthly

Question Number 28

If you have a car, would you be prepared to take part in a voluntary transport service?

Responses

Number of Respondents to Question : 747

Analysis

88% would not be prepared to take part. But 48 people registered interest in volunteering to help with a transport service.

Comments

SCDC must be encouraged to provide Royston & District Community Transport Scheme with better funding.

Question Number 29

If you use the train, what do you use it for and how often? Never, Occasionally, Often
Work, Shopping, Medical Visits, Social or Leisure, School/college/training, Adult education, Other

Responses

Number of Respondents to Question : 800

Analysis

Frequent use for all purposes, including work was less than 8%. 56% used it for social and leisure occasionally. 44% never used it.

Meldreth Parish Plan Data Analysis April 2005

Question Number 30

Would you like to see any improvements in the bus service with regard to?

Responses

Number of Respondents to Question : 872

Analysis

41% had no opinion. Of the remainder 40% wanted better routes & timetables, cost & disabled access were concerns for around 20%. 11% concerned with bus stop location.

Question Number 31

Would you like to see any improvements in the train service with regard to? Service, timetable, Cost, Reliability, Carriage of bicycles at peak times, Access for those with disabilities.

Responses

Number of Respondents to Question : 858

Analysis

37% had no opinion. 35% had cost concerns with service. Reliability & peak time bicycle carriage concerned 20%. 25% were concerned with disabled access.

Question Number 40

Do you have any difficulty in getting to the following? Hospital, Doctor, Chemist, Chiropodist, Optician, Dentist, Other medical facility.

Responses

Number of Respondents to Question : 830

Analysis

77% had no problem getting to identified medical services, but figure dropped to 61% for unnamed facilities. 14% occasional problems to hospital & 11% to doctors & chemists. Frequent problems although <5%: doctors polled 5%, & chemists & dentists 3%.

Comments

Responses may be lower from some socio-economic groups which means these figure may be inaccurate.

Question Number 51

Do you have transport difficulties in getting to the shops in the following locations? Meldreth, Melbourn, Royston, Cambridge London, Other (please specify)

Responses

Number of Respondents to Question : 863

Analysis

85% never had difficulties. Frequent difficulties to all destinations were rated at fewer than 4%. Comments mention difficulties getting to Milton Keynes, Letchworth, Baldock & Stevenage.

Comments

Responses may be lower from some socio-economic groups which means these figure may be inaccurate.

Meldreth Parish Plan Data Analysis

April 2005

ROAD SAFETY

Question Number 32

Would you support action to improve road safety in the following 'danger-spots'? College Farm bends (North End), Railway bridge, Shop vicinity (High St), School vicinity (High St), Whitecroft Rd, Other (state where), No action required

Responses

Number of Respondents to Question : 849

Analysis

Practically 50% would support North End bends & Railway Bridge safety improvements. 30-40% identified shop, school & Whitecroft Road & 23% mentioned other areas – Fenny Lane/Whitecroft Road crossing, Fieldgate bend, & chicanes at Station end of High Street. 13% thought no action was required.

Comments

Numerous comments.

Danger areas mentioned:

Junction Fenny Lane & Kneesworth Rd (20), Fenny Lane Stocks (9), Church area (8), chicane in High St (8), Fieldgate bends, Bell Close exit & North End (7 each), Stone Lane, Kneesworth Road, Whaddon Road (3 each), Station Road, Whitecroft Road junction & Gables Close (2 each)

Question Number 33

Do you feel in danger from speeding traffic in these areas of Meldreth? High Street, Whitecroft Road, Mettle Hill, North End, Station Road, Other (state where), None of these.

Responses

Number of Respondents to Question : 862

Analysis

Whitecroft Rd, High St & North End scored 35%. Station Rd & Mettle Hill 22%. 22% did not rate the named areas dangerous.

Comments

76 comments were produced:

Just about every road was mentioned in other comments: Key areas as in Q 32

Speed was cited as an issue: some wanted 19 m.p.h. speed limits like Cambourne's (these are unadopted roads).

Question Number 34

Are facilities for cyclists in Meldreth? Good, Reasonable, Poor, No Opinion.

Responses

Number of Respondents to Question : 877

Analysis

Evenly divided: 35% thought poor, 29% reasonable, with no opinion 31%. Only 4% thought good.

Comments

Road surfaces & speeding traffic are issues concerning some.

Question Number 35

Are facilities for horse riders in Meldreth? Good, Reasonable, Poor, No Opinion

Responses

Number of Respondents to Question : 875

Analysis

57% had no opinion. 19% evenly divided between reasonable & poor. Only 5% good.

Comments

Comments suggest a bad mix between horses & traffic; also the lack of bridleways for off-road riding.

Meldreth Parish Plan Data Analysis

April 2005

Question Number 36

In relation to paths and street lights, would you like to see any of the following in Meldreth? Cycle paths, More footpaths, More street lights, More environmentally sensitive street lights, More pavements, Pelican crossings, Dropped kerbs, None of the above.

Responses

Number of Respondents to Question : 864

Analysis

32% on average wanted more Cycle paths/footpaths/pavements & streetlights or environmentally sensitive lights. Pelican crossings & dropped curves polled 17%. 18% wanted none of suggested items.

Comments

Other suggestions made: Pelican crossing at school (7), Pelican crossing at Fieldgate (1), More lights in North End (2), More environmentally-sensitive street lighting instead of current (1), New pavements to Eternit & Shepreth (2), Level Pavements (2) & Dropped Curbs, No more street lights (1).

POLICES & CRIMES

Question Number 46

Do you regard the police coverage of Meldreth to be? Good, Reasonable, Poor, No opinion.

Responses

Number of Respondents to Question : 90

Analysis

Predictably, 62% thought policing was poor but 17% said reasonable & 20% had no opinion & only a tiny 1% rated policing good.

Comments

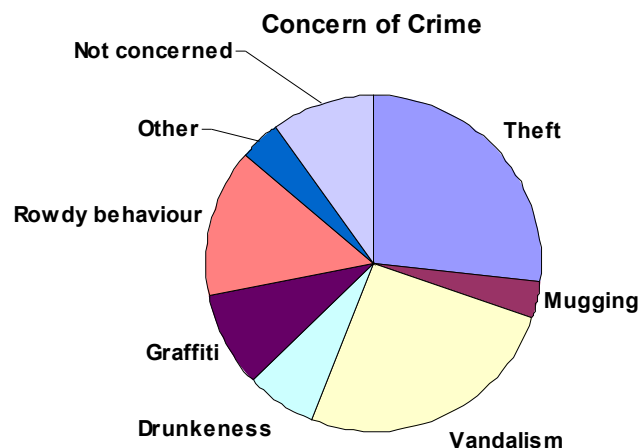
The fear of crime is more perceived than actual, as the number of reported crimes in Meldreth averages at between 3 & 5 per month.

Question Number 47

Which, if any, of the following crimes and anti-social behaviour concern you in Meldreth? Theft, Mugging, Vandalism, Drunkenness, Graffiti, Rowdy behaviour, Other, Not concerned.

Responses

Number of Respondents to Question : 849



Analysis

Theft & vandalism concerned most at 52%. Rowdiness, graffiti & drunkenness, 28%, 18%, 13% respectively. 20% not bothered. Drugs in Station yard mentioned.

Comments

Concerns were expressed on alleged drug dealing/use in Station Yard & on recreation ground, speeding vehicles, youth anti-social behaviour & drunkenness, fly tipping & litter.

Meldreth Parish Plan Data Analysis April 2005

Question Number 48

Are there any areas in Meldreth in which you feel unsafe? Yes, No, No opinion.

Responses

Number of Respondents to Question : 869

Analysis

91 Comments. Mettle Hill, Station, & Recreation ground were mentioned but 66% did not feel unsafe & 16% had no opinion.

Comments

91 comments were given! Unsafe areas mentioned during darkness: Station footpath to Melbourn, recreation ground footpath between High Street & Whitecroft Road, British Queen area, Village Hall when groups of youth are about, A10 underpass, Mettle Hill (9 mentions)

Meldreth Parish Plan Data Analysis

April 2005

SERVICES & SPECIAL NEEDS

Question Number 42

If you have used any of the following services which cover Meldreth during the last year, how do you rate the service?

Responses

835 people rated various services

	No. of Users	Opinion good	Opinion reasonable	Opinion poor	Not used/ No opinion	Satisfaction Rating %
Health visitor	51	37	14	0	579	100
Ambulance	67	53	14	2	574	97
R&D Community transport	31	23	7	1	601	97
Home help	69	53	14	2	613	97
District Nurse	99	62	31	6	557	94
Chiropody	34	13	18	3	597	91
Maternity care	29	21	5	3	599	90
Doctor	582	295	217	70	232	88
Loan of medical equipment	39	29	5	5	595	87
Physiotherapy services	69	38	13	18	569	74
Counselling services	10	6	1	3	618	70
Meals on wheels	6	2	1	3	6	50

Satisfaction rating is "good + reasonable" as a percentage of "good + reasonable + poor"

Analysis

Satisfaction ratings are generally high although the few responders about meals on wheels paint a disappointing picture. Anecdotal comments elsewhere in the survey answers indicate some have difficulty getting a timely physiotherapy appointment.

This question used was not specific enough to determine which doctor's surgery the respondents visited. Some residents chose to use surgeries either in Melbourn, Royston or Harston. A satisfaction rating of 90% means 70 Meldreth residents think the service they get from their doctor's surgery is poor and is cause for concern.

Older people without a car do not have the capability to shop around for the best service providers, without incurring significant, and for some unaffordable, transport costs.

For a village with a paucity of public transport, the limited use of, but high satisfaction with, Royston & District Community transport, indicates it is probably needs more publicity.

Comments

Action should be taken to promote the Royston & District transport scheme, and to give feedback to the Melbourn surgery and Meals on Wheels.

Question Number 43

Are you registered as disabled?

Responses

Number of Respondents to Question : 906

There were 51 respondents who are registered as disabled.

Comments

Combined with the 55 disabled at the SCOPE Meldreth Manor School, the village has a significant disabled population; good disabled access to key facilities should be given a high priority.

Question Number 44

Do you have a health problem/disability which affects your day-to-day living?

Responses

Number of Respondents to Question: 898; 107 of whom have health problems.

Comments

Again, when combined with the SCOPE Meldreth Manor School's needs, there is considerable opportunity for care and support work in the village

Meldreth Parish Plan Data Analysis April 2005

Question Number 45

Are there special problems in Meldreth for people with disabilities or parents with pushchairs?

Responses

Number of Respondents to Question : 606

Access to commercial premises	147 (24%)
Access to London-bound trains	374 (62%)
Pavement condition	301 (50%)
Height of shop counters	63 (10%)
Parking on pavements	217 (36%)
Uncut hedges/overhanging trees	356 (59%)
Access to Holy Trinity Church	53 (9%)
Other (please specify)	50 (8%)

The One Stop Shop entrance step was singled out in other comments as were adverse pavement cambers, width of pavements and drop-kerbs at key danger points

Comments

With over 100 disabled people and about 60 young needing pushchairs, Meldreth would benefit from:

- access improvement at the station and One Stop Shop
- an audit of pavements followed through by a programme of pavement design improvements
- volunteer pavement wardens, each caring for a stretch of pavement to encourage owners to trim hedges and trees, to discourage inconsiderate parking and to clear leaves (and litter)
- resolution of the One Stop Shop counter height and access to Holy Trinity Church

Question Number 52

How many times a month do you use the following services?

Responses

Number of Respondents to Question : 888

Times per month	10+	5-10	2-5	1 or less	% 1 or less
Counter service at Post Office	88	178	278	328	38%
Cash point in One Stop Shop	38	42	84	666	80%
Village Hall	34	24	79	702	84%
The British Queen Pub	36	22	36	737	89%

Comments

Two people added comments that the cash machine is too expensive. Eight added adverse comments about the pub.

Over 60% of the village use the Post Office – it is a valued, and for some, essential service. 20% use the cash point (the heaviest users are in the age range 16-24 at about 40%). The Village Hall and especially the pub would appear to be under utilised in the context of a village community (across all age ranges for the pub – whereas at least 32% of those aged 65-84 use the Village Hall).

Meldreth Parish Plan Data Analysis

April 2005

FOOTPATHS & ENVIRONMENT

Question Number 50

In relation to local footpaths and bridleways, can you answer the following questions? Do you know where the local paths are? Can you use them without difficulty? Are they well signposted? Would you be willing to help maintain them?

Responses

Number of Respondents to Question : 863

Analysis

93 volunteered for maintenance. 56% knew locations & had no difficulty in using. Equally, signposting was rated good or bad by 35%!

Comments

Comments mentioned Fieldgate/Bury Lane as overgrown; some wanted tarmacadam, some no further urbanisation.

Clean up by volunteers: the Parish Paths Partnership Group has already been launched.

Question Number 60

How important are the following features of the surrounding countryside to you? Small woods (e.g. Melwood), Orchards, Hedges, Ditches, Meadows and green fields, Traditional farm buildings, Water courses.

Responses

Number of Respondents to Question : 861

Analysis

Meadows & green fields, woods, water courses, hedges & ditches were very important or important for 80%. Not special or no opinion polled 7%

Question Number 62

Do you think the following would improve the environment of Meldreth?

Plant more trees, Cut down some trees, Look after woodlands, Preserve single trees in special places, Preserve old orchards, Plant new orchards, Keep hedges short and tidy, Let hedges grow naturally, Plant more hedges, Other (please specify - e.g. more seats/bins)

Responses

Number of Respondents to Question : 793

Analysis

55% favoured more trees either plantings or preservations. There were adverse comments on leylandii cypresses in the conservation area. More than half of respondents (56%) wanted short & tidy hedges & 35% wanted more hedges, with 23% in favour of allowing natural growth. Seats, litter bins & dog bins (23%) featured significantly in added comments & a public footpath to Shepreth was also requested.

Comments

50% of comments requested more litter/ dog bins & 44% wanted seats. Other comments wanted cleared ditches, sympathetic hedge maintenance in field areas but short cutting on highways. There were calls for a Village Garden scheme and for a Village Warden.

Question Number 63

Do you think the following would help to protect wildlife in Meldreth? Manage meadows for wildlife and people, Create grass borders around fields, Create local nature reserves, Discourage too many people using countryside, Reduce pollution in the countryside, Campaign against litter and rubbish, Look after woods fields lakes and water courses, Create new ponds

Responses

Number of Respondents to Question : 791

Analysis

Woods, fields & watercourses & a campaign against litter scored 74%. Managing meadows & field borders scored highly. Comments on too much litter & rubbish & the need for cleaning up the River Mel.

Comments

"Reduce farm chemicals in water", "Clean up Mel between Melbourn & Meldreth", "Encourage the growing of insect and butterfly friendly plants - including nettles and brambles", "Encourage wood piles", "Put up nest boxes or encourage villagers to do so", "Protection required from rabbits and deer making lives miserable!"

Meldreth Parish Plan Data Analysis

April 2005

SOCIAL & SPORT

Question Number 53

What are your views on local social facilities for?

Responses

Number of Respondents to Question : 855; of those who had definite opinions:

Facilities for	Good	Reasonable	Poor	% good and reasonable
Children up to 16	46	164	286	42%
Young people 17-25	9	67	406	16%
Aged 26-60	43	251	223	57%
Over 60s	107	236	92	79%

Analysis

The ratings of each age group for their own age group's facilities was virtually identical to how all age groups rated that age group's facilities.

Comments

There is a strong consensus of reasonable satisfaction about the facilities for the Over 60s and dissatisfaction about those for young people. There are very mixed views about facilities for children and 26-60 year olds.

Question Number 54

How often do you use the following facilities?

Responses

Number of Respondents to Question : Most didn't use the facilities – of those that did:

	Weekly	Monthl y	Occasionally	Total Users
Melbourn swimming pool	90	29	168	287
Golf course	26	22	76	124
Tennis club	17	11	72	100
Horse/pony riding	11	1	18	30
Bowls club	15	1	13	29
Football club	19	2	8	29
Youth club	13	5	6	24
Croquet club	4	1	15	20

Comments

The Melbourn swimming pool is clearly an asset to Meldreth, and local golf courses and the tennis club each provide recreation for over 100 people. Other clubs attract many fewer participants – most are known to be seeking new members.

Question Number 55

Which new sports clubs/activities would you attend in Meldreth if they were provided?

Responses

369 responded – the numbers for each were:

199 Badminton
131 Billiards/snooker
78 Table tennis
31 Judo

Respondents were asked if there were any other sports they would attend, if provided:

27 Gym/fitness centre
15 Yoga
7 Swimming

Many other indoor and outdoor sports, forms of dancing and indoor pastimes got a mention

Comments

Badminton, billiards/snooker/pool and table tennis facilities should all attract reasonably strong participation. For other sports, better publicity of what is available in surrounding villages should be beneficial, if it is not cost effective to provide these in Meldreth.

Meldreth Parish Plan Data Analysis

April 2005

Question Number 56

How could sports facilities in Meldreth be improved?

Responses

There were 280 suggestions or comments, of which the highlights were:

- 33 fuller use of existing facilities (recreation ground, schools, village hall and Eternit)
- 27 build a sports hall or leisure centre
- 25 more for the young, including encouraging participation via taster sessions and tennis lessons for the young (mentioned by 3 people)
- 23 more information about existing facilities and clubs- particularly for recent residents
- 20 gym or fitness centre
- 20 more facilities and clubs
- 19 better pavilion and changing facilities
- 13 lighting on the recreation ground including 6 mentioning tennis court lights
- 10 cycling track/cycle paths
- 9 swimming pool
- 6 better playground/ replace swings
- 6 all weather area for basketball, 5 a-side football and skate boards

New activities that were identified were:

Girls football team, netball, Tumble Tots, badminton, cricket, ladies golf croquet club, jogging circuit, putting green, rugby posts, running track, junior tennis club, lawn tennis club, indoor tennis, trampoline club, and daytime yoga.

11 respondents said facilities were OK as they are - in the context of the size of the village and access to Melbourn facilities.

Comments

There is a clear call for improving the current pavilion, either replacing it with something larger or going to a substantial sports hall/leisure centre. This is a strategic decision for the village that needs careful thought.

The facilities available in the school, village hall, Meldreth Manor School and Eternit should beneficially be worked in co-operation to provide opportunities for more sports activities. The village hall balance between sports and other activities should be examined to maximise its utilisation.

More advertising by clubs and their providing tasters and training (including for the young) should be arranged.

Meldreth Parish Plan Data Analysis

April 2005

PARISH & OTHER COUNCILS - ISSUES

Question Number 49

What do you think of the state of the following?

Responses

Number of Respondents to Question : 878

	Good	Reasonable	Poor	No Opinion
Roads	97	475	211	46
Pavements	55	443	299	48
Signposts	208	448	50	90
Verges	101	459	145	91
Street lighting	130	404	206	66
Public footpaths	98	419	182	102

Number of over 65s responding to "poor" on the state of the pavements = 78 (out of 203 over 65s = 38%)

Number of over 65s responding to "poor" on the state of the street lighting = 38 (out of 203 over 65s = 18.7%)

Number of families with children 0-4 responding to "poor" on the state of the pavements = 35 (out of 92 families with children 0-4 = 38%)

Number of families with children 0-4 responding to "poor" on the state of the street lighting = 13 (out of 92 families with children 0-4 = 14%)

Analysis

Almost 40% of those with opinions thought the state of the pavements was "poor" – this was similar to the percentage response from all over 65s and families with young children.

Signposts were judged good or reasonable by 93% of those with opinions. Figures for roads (73%), verges (79%), street lighting (72%) and public footpaths (74%) still leave a significant number of people in the village who rate them as "poor".

Question Number 57

The local council is empowered to raise money through the council tax. Are you satisfied with the way this money is spent?

Responses

Number of Respondents to Question : 873

- 12 (1%) Very satisfied
- 221 (25%) Quite satisfied
- 155 (18%) Quite dissatisfied
- 133 (15%) Very dissatisfied
- 244 (28%) Don't know how it is spent
- 108 (12%) No opinion

Analysis

No-one likes taxes so only 27% satisfaction is not unexpected. Given the amount of information provided by SCDC and CCC on how the money is spent a 28% "don't know how" response suggests the message is not getting through.

Question Number 58

What do you think Meldreth Parish Council spending priorities should be? Please tick the four things you consider are the most important.

Responses

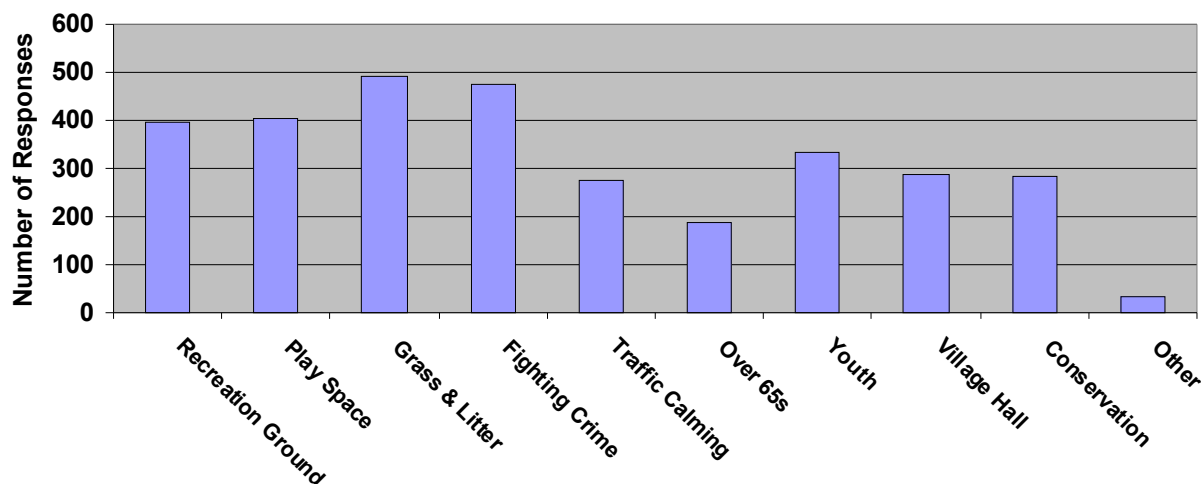
Number of Respondents to Question : 855

- 396 (46%) Recreation ground
- 403 (47%) Children's play space
- 492 (57%) Grass cutting and litter picking
- 474 (55%) Helping fight crime
- 274 (32%) Traffic calming
- 189 (22%) Over 65's services
- 332 (39%) Youth
- 286 (34%) Village Hall
- 282 (33%) Conservation Projects
- 34 (4%) Other (please specify)

Meldreth Parish Plan Data Analysis

April 2005

Spending Priorities for Parish Council



Number of adults with children 0-10 who identified the recreational ground as the Parish Council's spending priorities = 95 (out of 168 adults with children 0-10 = 57%)

Number of adults with children 0-10 who identified the children's play space as the Parish Council's spending priorities = 117 (out of 168 adults with children 0-10 = 70%)

Number of adults with children 11-16 who identified the recreational ground as the Parish Council's spending priorities = 46 (out of 92 adults with children 0-10 = 50%)

Number of adults with children 11-16 who identified the children's play space as the Parish Council's spending priorities = 43 (out of 92 adults with children 0-10 = 47%)

Analysis

Top 4 are Grass cutting/litter picking (58%), Fighting crime (55%), Children's play space (47%) and "Rec" (46%). The response for spending on the recreational ground and children's play space is higher from adults with young children.

Other spending priorities

	No. of Mentions
Footpath & Bridleway improvements	8
Hedge cutting	4
Social centre/activities	4
School road safety	4
More dog bins	3
Pavement improvements	3
More litter bins	2
Hedge heights in North End	2
Keep ditches & culverts clear	2
Bonfire controls	2
More seats	2
Less bins & seats	1
Controlling vandalism & rowdiness in pub	1
Shaded area in rec.	1
The travellers' site - helping to fight against proposed plans	1

Question Number 59

Do you feel your elected representatives in local government are sufficiently aware of local concerns and feelings?

Responses

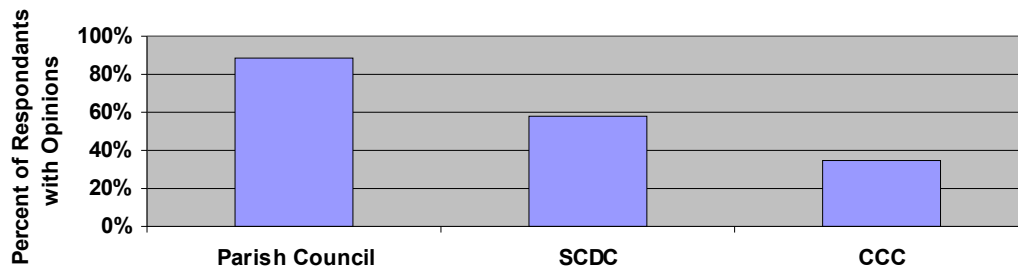
Number of Respondents to Question : 839

	Fully Aware	Quite Aware	Not Aware	No Opinion
Parish Council	308 (37%)	260 (31%)	77 (9%)	187 (22%)
South Cambridgeshire District Council (SCDC)	80 (10%)	262 (31%)	253 (30%)	218 (26%)
Cambridgeshire County Council (CCC)	28 (3%)	150 (18%)	327 (39%)	289 (34%)

Meldreth Parish Plan Data Analysis

April 2005

Awareness of Village Issues



Analysis

The Parish Council has a high awareness rating from those with opinions. Awareness falls with distance from village with SCDC rated as 57% and CCC as 35%.

Comments

This can be used to help SCDC and CCC to engage better with PC

Question Number 64

If suggestions raised by the questionnaire require money for implementation, where should that money come from?

Responses

Number of Respondents to Question : 750

214 (29%) Private contributions

256 (34%) Moderate council tax increases

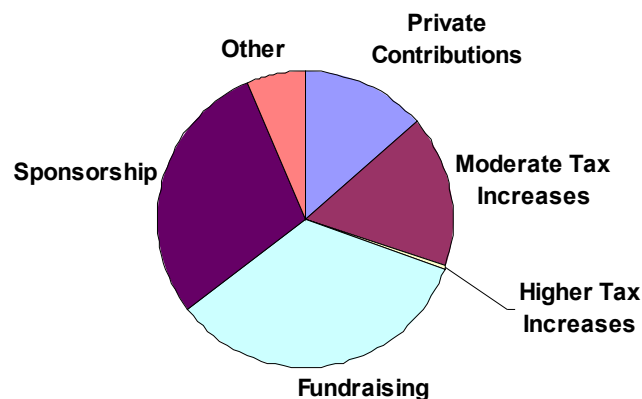
10 (1%) Higher council tax increases

533 (71%) Fundraising

454 (61%) Sponsorship

101 (14%) Other

Sources of Funding for Plan Actions



Number of over 65s who accept moderate or higher council tax increases = 47 (out of 203 over 65s = 23%) and the number of people with children 0-10 who accept moderate or higher council tax increases = 44 (out of 205 people with children 0-10 = 21.5%)

Analysis

35% would accept moderate or higher tax increases to raise money for implementation of action from the plan. This acceptance is significantly, and not surprisingly, lower from over 65's and families with young children. However a majority of respondents favour fundraising (71%) & sponsorship (60%). 25 respondents commented that council tax was too high and could be better used; others suggested lottery funding, local income tax, annual stipend from residents, government & other grants and brewery funding.

VILLAGE AMBIANCE (BEST, WORST, FUTURE VISION) & COMMENTS

Question Number 18

What is the best thing about Meldreth for you?

Meldreth Parish Plan Data Analysis

April 2005

Responses

Number of Respondents to Question : 771

N.B. No. of mentions is in brackets.

The most mentions are of a friendly (75), rural (49), peaceful (29), pleasant (22), pretty or attractive (24) village with a good community spirit and village life (106). Only one respondent described Meldreth as lively. However closeness to family (22) and friends (37) was important.

The location of Meldreth is important to many people with 100 respondents mentioning the railway station for good access to Cambridge (72), London (40) and Royston (9) and convenience to work (47). Road access to M11 (6), A10 (2) and A1 (1) and Luton & Stansted airports (2) are less important; and there were no mentions of public buses as a "best thing"! Local shops (31), post office (15), schools (52), church (11) and its bells (2), village hall (8) all feature.

The countryside (53) is important to many with specific mentions of the trees and woods (14), the river with its walks & Melwood (7), country walks (8), the chestnut tree at the stocks (2). Sports and children's play (4) are covered with the recreation ground (4), tennis courts (4) and football (2), pool at the pub (2) and bowls (1) being mentioned. The only mention of music is live music at the pub (2). Meldreth's listed and attractive thatched cottages are not mentioned although the High Street appearance and other houses get 2 mentions

Analysis

People find Meldreth a pleasant semi-rural village with good communications; particularly rail links to London and Cambridge.

Question 19 Number

What is the worst thing about Meldreth for you?

Responses

Number of Respondents to Question : 744

N.B. No of mentions are in brackets.

The "worst thing" mentioned by respondents was that the closed Mettle Hill travellers' site might reopen (169). This was closely followed by a desire for a good pub expressed by 157 people. The British Queen is criticised for being unwelcoming, dingy, dirty, and rundown with 12 comments on the lack of food and many noting that they would welcome a pub they could take friends to and that would be a focus for social interaction in the community.

The third area of concern relates to traffic - speeding, congestion and parking. There are 69 mentions of speeding traffic with High Street (4), Whitecroft Road (4) and North End (3) specified. There are 12 mentions of heavy lorries and 13 of parking - with school (4), shop (2) and High Street (2) singled out and 3 complaints of High Street congestion. There were 2 requests for disabled parking. 80 mentioned poor buses (60) and public transport (20); only 1 mentioned need for more trains. Against the speeding concerns were 31 complaints on the traffic calming in the High Street (Safer Routes to School). Poor pavements (30), because of bad surface, too narrow and obstructed by hedges, not continuous in North End and not level, were mentioned with specific crossing concerns at the station bridge (5), Fieldgate (3) and College Farm bend (5). The lack of pavements to Eternit (2) and Shepreth (1) was mentioned. The potholes in Bury Lane were mentioned by 4 and gates on public footpaths by 1.10 mentioned poor street lighting (2 in North End).

However there are 4 respondents concerned at increasing urbanisation. Environmental issues raised were noise (17), air pollution and smells (10), flooding (6) and rubbish on roadside verges (3). Noise was mentioned in connection with the A10 (6), other traffic (5), trains (2), shop (2) and village hall (4). There are 9 mentions of smells (turkey farms (4), sewage farm (2), smoke & bonfires (3)). People were also concerned by fouling by dogs (3) and horses (3). There are 19 responses that there was not enough for young people to do in Meldreth. Yobbish behaviour, vandalism and hooligans were mentioned by 12 respondents while burglaries and crime were mentioned by 2. Only 2 respondents mentioned poor cover by police. 2 respondents were concerned at the bin collection service. 3 mentioned the Postcode as a worst thing. 4 mentioned that Meldreth was a sprawling village with no obvious centre. 6 respondents regretted the lack of affordable housing and 1 the need for smaller houses or flats. The recreation ground was mentioned in connection with need for better swings (2) and children's play equipment (3) and litter and dog fouling (4).

Meldreth Parish Plan Data Analysis

April 2005

Analysis

Nearly a quarter of those responding (23%) said the worst thing for them was that the closed Mettle Hill traveller's site might reopen; while 21% thought the British Queen was the worst thing for them and 13% cited traffic related concerns.

Question Number 61

Which, if any, areas of Meldreth could be improved visually?

Responses

Number of Respondents to Question : 451 (537 Not Answered)

Areas specified for improvements	No. of Mentions
Closed travellers' site on Mettle Hill	147
British Queen and its garden and car park	121
Train station area and car park and yard	64
Railway bridge and buildings around it (tree screening suggested by 2 respondents)	33
High Street	18
Chiswick Supplies industrial park	16
Recreation Ground including ditch, footpath and entrance	16
West Way (including equipment storage at end (2))	13
One Stop shop and associated parking (2)	12
College Farm industrial area	10
Elin Way (including signs (4))	6
Fieldgate/St. John's Farm parking area	5
Youth Club & Pavilion	5
Traffic calming on High Street	5
Stocks area	5
Village Hall and car Park	5
High Leylandii Hedge on North End	4
Footpath from station to Melbourn and turkey farm	4
Bury Lane, including improvements at Melbourn end	4
Tavern Yard	3
School House and garden	3
Parking opposite church	3
Fenny Lane cross roads	2
North End verges and ditches	2
Whitcroft Road cut back hedges (1) and plant hedges/trees (1)	2

Analysis

The closed travellers' site is mentioned by 33% of respondents, with 27% mentioning the British Queen and 25% the areas close to the station.

Question Number 65

How would you like Meldreth to be in the future?

Responses

Meldreth Parish Plan Data Analysis

April 2005

Number of Respondents to Question : 546 (442 Not Answered)

The most mentioned topics are again concerns on an increase in the number of travellers (43) and wishes for a better pub (67). 21 respondents specifically wanted Meldreth to remain the same size with no more development (4) or infilling (1). However 14 respondents want to see more affordable or starter housing and 16 want more opportunities and activities for the young. There were 94 respondents who said in general Meldreth should stay "as it is" or stay the "same".

There is a long list of things that respondents want more of including: shops (8), social activities (7), trees & plants (4), shop improvements or restricted opening (4), police (3), "fun places" (3), seats in the rec (3), wheelchair friendly access & pavements (2), paths to other villages (2), more church orientation (2), country work (2), character (2), places for people to meet (2), traffic calming (2), sport in the village hall, cycle paths, tranquillity, eco-friendly, awareness of people who need help and a more integrated society with stronger community spirit. There were a number of institutions that respondents were keen to keep or enhance including: the shop (42), the primary school (21), better buses (13), the station (4) and the post office (4). But respondents wanted less of: lorries and traffic (5), horses, city workers, pollution, litter, parking, industry and conservatism.

Some quotations:

"We have a special school, old people's home & accommodation, primary school and close by a special hospital. We could specialise in the caring professions so that facilities for the disabled could be used more and improved (as in Holland)."

"Safe, friendly, sustainable with attractive rural setting. Retaining historical features & interpreting them so people understand history of village. Community where people look out for neighbours and notice when people are in need. Place to come home to."

"A village which retains its current character, growing slightly to provide sufficient affordable housing to accommodate young families with pre-school age and school age children."

Question Number Further Comments

Responses

Transport:

Several endorsing, improved bus services (2), speed limit reduction to 19 mph!
Village minibus suggestion

Road Safety:

Restrict HGVs speeding & causing damage to verges/cornerposts (5)
Danger areas as previously mentioned(3) Better sight lines by hedge cutting in North End
Discourage cycling and parking on pavements, improve for wheelchair users.

Footpaths & Environment:

15 comments, some covering items already covered by questions:
Pavement North End to Shepreth & along Chiswick End.
Environmental Interpretation Boards
More bridleways
Disabled-friendly styles & gates on footpaths
Clear Ditches in Chiswick End, Whitecroft Road, & North End.
Larger Recreation Ground Car park.